

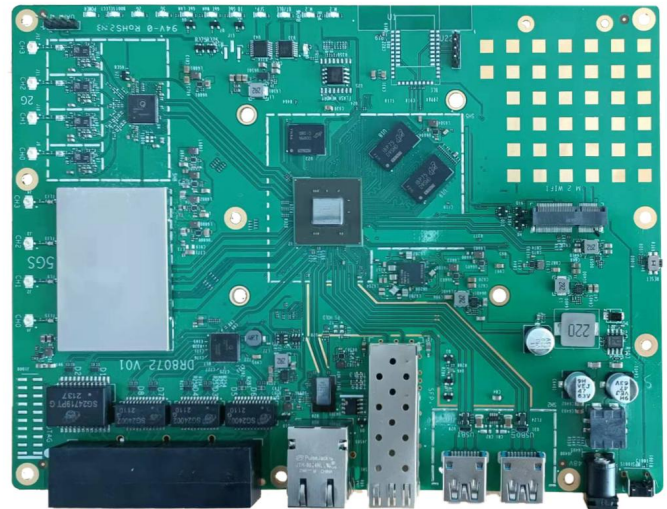


DR8072 V01

**2x(4x4) 2.4GHz & 5GHz 11AX MU-MIMO
DUAL CONCURRENT EMBEDDED BOARD**

Features

- Qualcomm Atheros IPQ8072A AR Quad Core CPU
- On-board 5GHz radio, up to 2475Mbps physical data rate 8 MB NOR Flash, 256MB NAND Flash
- On-board 2.4GHz radio, up to 1147Mbps physical data rate
- Support 11ax TX Beamforming
- Support 11ac/ax MU-MIMO DL and UL
- Support OFDMA DL and UL
- support with 4x4/5GHz + 4x4/2.4GHz
- Supports Dynamic Frequency Selection (DFS)



Applications

- Dual Band MU-MIMO 802.11g/n/ac/ax
- Access Point Wireless application
- 4x4MU-MIMO 802.11ax Access Point

Product Description

DR8072 V01 based on IPQ8072A chipset is an enterprise wireless module integrated with 2x2(4x4) 5G high power Radio module and 4x4 2.4G high power Radio module designed specifically to provide users with mobile access to high-bandwidth video streaming, voice, and data transmission for office and challenging RF environment in factories, warehouses establishment.



DR8072 V01

2x(4x4) 2.4GHz & 5GHz 11AX MU-MIMO
DUAL CONCURRENT EMBEDDED BOARD

Absolute Maximum Rating

Parameter	Rating	Unit
Operating Temperature Range	-20 to +70	°C
Storage Temperature Range	-40 to +90	°C
Operating Humidity Range	5 to +95 (non-condensing)	%
Storage Humidity Range	0 to +90 (non-condensing)	%

<http://www.wallystech.com/>

Hardware Specifications

Symbol	Parameter
CPU	Qualcomm Atheros Quad Core ARM Cortex 64-bit A53 Processor IPQ8072A 2.2GHz CPU
CPU Frequency	Derived from Qualcomm Atheros AP . HK0 1
System Memory	1x 512MB, DDR4 2400MHz 16-bit interface(RAM can be up to 2GB as optional)
Frequency Range	2.412~2.472GHz, 5.150~5.825GHz
MiniPCle Slot	1x MiniPCle Slot with PCIe 3.0
Modulation Techniques	OFDMA: BPSK, QPSK, 16-QAM, 64-QAM, 256-QAM, 1024-QAM
Environmental Temperature	Operating: -20°C to 70°C, Storage: -40°C to 90°C
Flash	NOR Flash: 8 MB NAND Flash: 256MB
Wireless	On-board 4x4 2.4GHz MU-MIMO OFDMA 802.11b/g/n/ax, max 17dBm per chain On-board 4x4 5GHz MU-MIMO OFDMA 802.11a/n/ac/ax, max 17dBm per chain 8x U.FL Connectors
Reset Buttons	1x S/W Reset Button
DC Jack Input	1x DC Jack Connector: 12V
Interface	4x 1Gbps Ethernet Port, 1x 10Gbps Ethernet Port 1x 10Gbps SFP 2x USB 3.0 Port 1x JTAG 20 Pin Connector 1x Serial Port 4 Pin Connector
LED	2x RGB LED Indicators
Power Consumption	TBD