



DR5018

User manual

CONFIDENTIAL

THIS DOCUMENT CONTAINS PROPRIETARY TECHNICAL INFORMATION, WHICH IS THE PROPERTY OF THE WALLYTECH AND SHALL NOT BE DISCLOSED TO OTHERS IN WHOLE OR IN PART, REPRODUCED, COPIED, OR USED AS THE BASIS FOR DESIGN, MANUFACTURING, OR SALE OF APPARATUS WITHOUT WRITTEN PERMISSION OF WALLYTECH.

TABLES OF CONTENT

IPQ50xx UI setting	3
DR5018 UART configuration	8

IPQ50xx UI setting

1. input the IP: 192.168.1.1 and login;
2. Input the username: admin; password: password , then press the button “Login”



Authorization Required

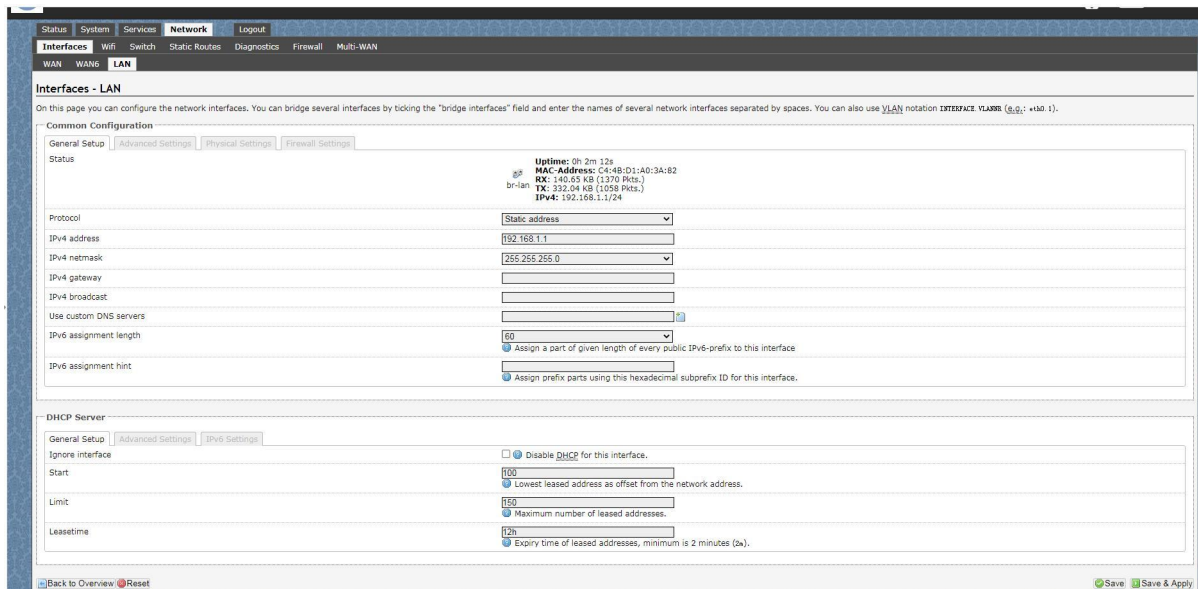
Please enter your username and password.

Username:

Password:

3. network setting

- IP Setting: setting IP in the path “network->Interfaces->LAN->IPv4 address”
- DHCP setting: DHCP and other protocol setting in the path network->Interfaces->LAN->protocol”



Network

Interfaces

WAN WAN6 LAN

Interfaces - LAN

On this page you can configure the network interfaces. You can bridge several interfaces by ticking the "bridge interfaces" field and enter the names of several network interfaces separated by spaces. You can also use VLAN notation `INTERFACE.VLANID (e.g.: eth0.1)`.

Common Configuration

General Setup | Advanced Settings | Physical Settings | Firewall Settings

Status

Protocol: Static address

IPv4 address: 192.168.1.1

IPv4 netmask: 255.255.255.0

IPv4 gateway:

IPv4 broadcast:

Use custom DNS servers:

IPv6 assignment length: 60

IPv6 assignment hint:

Uptime: 0h 2m 12s

MAC-Address: C4:4B:D1:A0:3A:82

RX: 140.85 KB (1370 Pkts.)

TX: 232.04 KB (1058 Pkts.)

IPv4: 192.168.1.1/24

DHCP Server

General Setup | Advanced Settings | IPv6 Settings

Ignore interface: ☐ Disable DHCP for this interface.

Start: 100

Limit: 160

Leasetime: 12h

Back to Overview Reset Save Save & Apply

4. wireless setting

- login the path network->Interfaces->WIFI, then choose one wifi,we select the red marked as example,click the button 'Edit'

OpenWrt | FIRMWARE-2167-202110280138 unknown | Load: 0.00 0.04 0.05 | Auto Refresh: on

Change

Status System Services **Network** Logout

Interfaces **Wifi** Switch Static Routes Diagnostics Firewall Multi-WAN

wifi0: Master "OpenWrt"

Wireless Overview

Generic Atheros 802.11bgnax (wifi0)
Channel: 11 (2.462 GHz) | Bitrate: 286 Mbit/s

SSID: OpenWrt | Mode: Master
15% BSSID: C4:4B:D1:A0:3A:83 | Encryption: None

Scan Add Disable Edit Remove

Associated Stations

SSID	MAC-Address	IPv4-Address	Noise	Rssi	RX Rate	TX Rate	TxCCQ	Up Time
No information available								

- The detail information show in the picture as below: Channel:for channel select;
- Transmit Power:signal chain power setting; ESSID:for ID
- Mode:it support 6 mode AP,AP(WDS),client,client(WDS) ,AD-Hoc,Static WDS.

The screenshot displays the OpenWrt web interface for configuring the wireless network. The top navigation bar includes links for Status, System, Services, Network, and Logout. The 'Network' section is active, showing options for Interfaces, WiFi, Switch, Static Routes, Diagnostics, Firewall, and Multi-WAN. The 'WiFi' section is selected, showing the configuration for the Master 'OpenWrt' (ath0) interface.

Wireless Network: Master "OpenWrt" (ath0)

The Device Configuration section covers physical settings of the radio hardware. It includes a status bar showing the wireless network is enabled. The configuration fields are as follows:

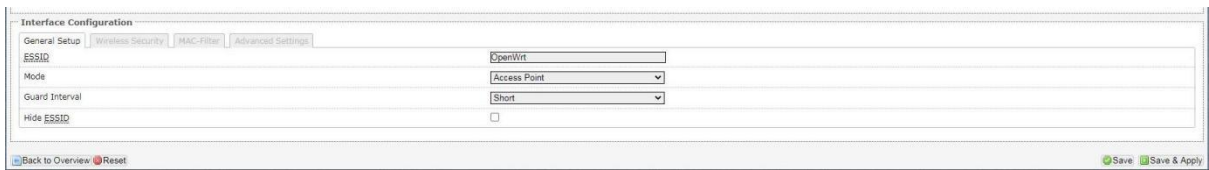
- Mode:** Master
- SSID:** OpenWrt
- BSSID:** C4:4B:01:A0:3A:82
- Encryption:** None
- Channel:** 11 (2.462 GHz)
- Tx-Power:** 27 dBm
- Signal:** 1 dBm
- Noise:** -94 dBm
- Bitrate:** 286.0 Mbit/s
- Country:** US

The Interface Configuration section includes tabs for General Setup, Wireless Security, MAC-Filter, and Advanced Settings. The General Setup tab is active, showing the following fields:

- ESSID:** OpenWrt
- Mode:** Access Point
- Guard Interval:** Short
- Hide ESSID:** ☐

At the bottom of the page, there are links for Back to Overview, Reset, Save, and Save & Apply.

IN Advance setting you can select which chain do you need,which BW do you need and so on

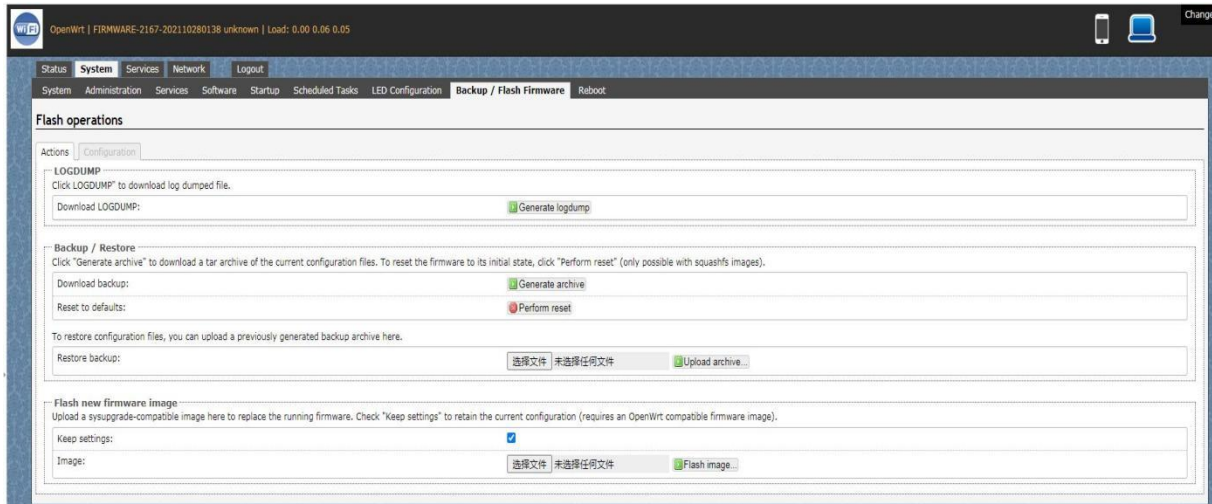


The screenshot displays the 'Interface Configuration' web interface, specifically the 'Advanced Settings' tab. The interface includes several configuration fields: 'ESSID' (text input), 'Mode' (dropdown menu set to 'Access Point'), 'Guard Interval' (dropdown menu set to 'Short'), and 'Hide ESSID' (checkbox). At the bottom, there are buttons for 'Back to Overview', 'Reset', 'Save', and 'Save & Apply'.

In the end ,you need click the button “Save & Apply”, and wait for 2 minutes, then you can enjoy it.

5. Backup archive

Login System->Backup/Flash Firmware; Then click the button "Generate archive"
;Then download the archive



6.update new image

Login System->Backup/Flash
Firmware;

Then click the button “浏览”，choose your image,

Then click the button “flash image”

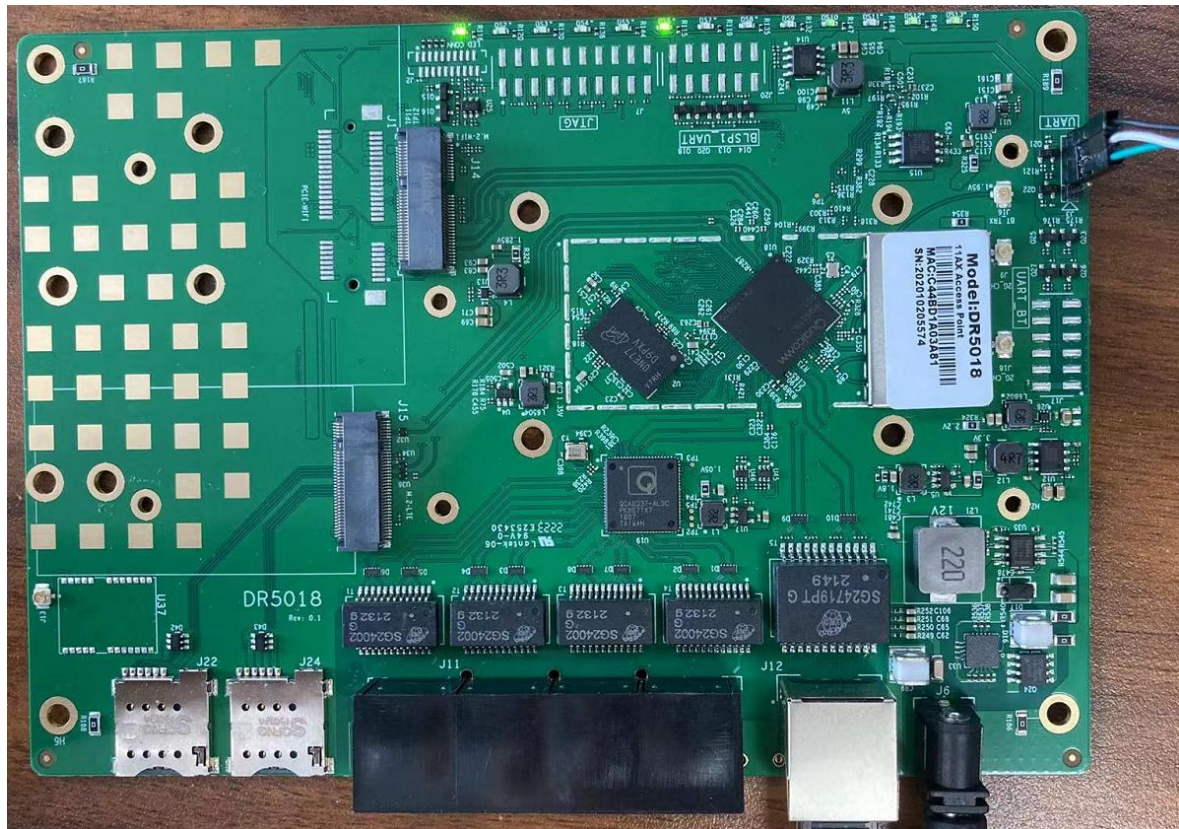
Then click the button “Proceed”，warning don't power off, wait for about three minutes，then the system will reboot automatic.then login again,you can enjoy it.



DR5018 UART configuration

1. Induction

That is show how to use the Uart for DR5018



2. Device connect

Step 1: connect the cable to the DR5018

As the picture as above, the sequence of the signal in the UART connector: GND, TX, RX, VCC,

And we need use GND connect black cable, TX connect to white cable, RX connect to Green cable , VCC don't use.

Step 2: Check the Com number on the PC

Connect the console board to the PC with USB connector,

Then check the com number on the PC, the com number on the test pc is Com15



Step 3 login with the software
 You can use putty ,Xshell or some others,enjoy it

```

BusyBox v1.30.1 () built-in shell (ash)

  MM      MM      MMMMMMM      M      M
  MMMMMMM      MMMMMMM      MMMMMMMMMMMMMMM      MM      MM
  MMMMMMM      MM      MMMMMMM      MMMMMMMMMMMMMMM      MM      MM
MMMM- MMMMMMM      MM      MMMMMMM      MMMMMMM      MMMMMMM      MMMMMMMMMMMMMMM
MMMM- MMMMMMM      MMMMMMM      MM      MMMMMMM      MMMMMMM      MMMMMMMMMMMMMMM
MMMM- MMMMMMM      MMMMMMM      MMMMMMM      MMMMMMM      MMMMMMM      MMMMMMMMMMMMMMM
MMMM- MMMMMMM      MMMMMMM      MMMMMMMMMMMMMMM      MMMMMMM      MMMMMMMMMMMMMMMMMMM
MMMM- MMMMMMM      MMMMMMM      MMMMMMMMMMMMMMM      MMMMMMM      MMMMMMMMMMMMMMMMMMM
MMMM- MMMMMMM      MM      MMMMMMM      MMMMMMM      MMMMMMM      MMMMMMM      MMMMMMM
MMMM- ,MMMM      MMMMMMM      MM      MMMMMMM      MMMMMMM      MMMMMMM      MMMMMMM
MMMMMMMMMMMM      MMMMMMM      M      MMMMMMMMMMMMMMM      MMMMMMM      MMMMMMMMMMMMMMM
MMMMMMMMMMMM      MMMMMMM      M      MMMMMMMMMMMMMMM      MMMMMMM      MMMMMMM
MMMM      M      M      MMMMMMM      M      M

-----
For those about to rock... (Chaos Calmer, unknown)
-----

root@OpenWrt:~#
root@OpenWrt:~#
root@OpenWrt:~#
root@OpenWrt:~#
root@OpenWrt:~#
root@OpenWrt:~#
root@OpenWrt:~#
root@OpenWrt:~#
root@OpenWrt:~#
root@OpenWrt:~#
root@OpenWrt:~#
root@OpenWrt:~#
root@OpenWrt:~#
root@OpenWrt:~#
root@OpenWrt:~#

```